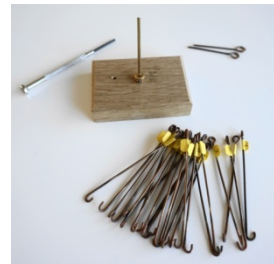


## Step 2: the keyboard

The keys need to be mounted, each in their own place within the framework. If they are in the proper order, they will fit exactly.

### 1. What do you need?

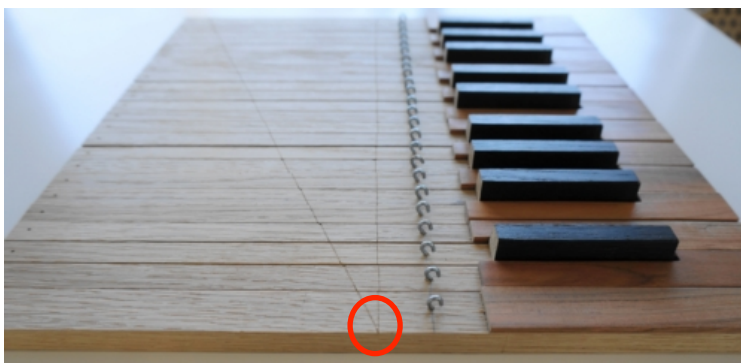


- 24 keys
- slat
- block with 24 hooks (tracker wires), 2 locking pins, screw driver

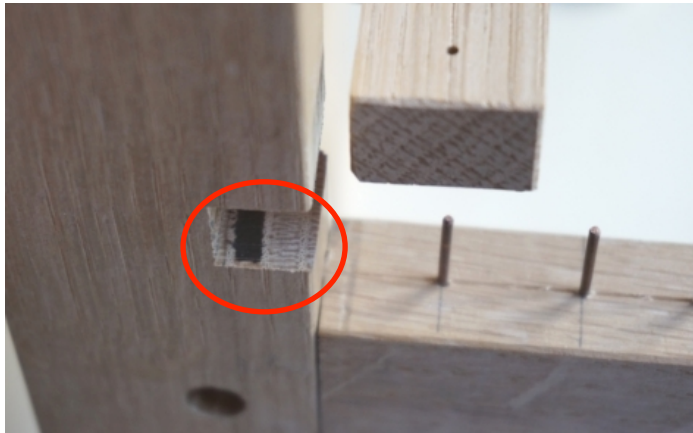
### 2. How to proceed



- Gather the loose keys
- Lay them all down in the same way: the blacks and the browns with the same side down.



- Place the keys in the correct order
- Start with the key on which the two lines meet.
- When the two lines on all the keys are aligned, the sequence is correct.



- Now the keys need to be placed in their correct order into the framework.
- The back end of the key needs to go on the slat near the notch in the frame.
- The pin on slat needs to go through the hole in the key.



- The front end of each key must fit between the pins on the slat of the front frame (the one with the cushion strip)
- Place all the keys, in sequence, on the framework in this manner.



- When all the keys are in the organ, secure them with a slat.
- Insert the slat in the notch of the side frame.
- Note that the Roman numerals match i order to place the slat correctly.



- Take the two locking pins from the block. (The hooks will be used soon in the next step).
- Insert the locking pins diagonally in the holes in the slat.
- You have now placed the keys in the framework.